

CONTENTS



Welcome Message	1
Organizers:	3
<i>APA and Its Council</i>	3
<i>International Organizing Committee (IOC)</i>	4
<i>Scientific Committee</i>	4
<i>APA Secretariat Team</i>	4
<i>Theme Conveners and Reviewers</i>	5
<i>National Organizing Committee Secretariat Team</i>	7
<i>Host and Co-hosts</i>	8
Conference Information:	10
<i>Locations of the conference hotels and venues</i>	10
<i>Conference Hotels</i>	11
<i>Conference Venues</i>	12
<i>Exhibitors and Sponsors</i>	17
<i>Registration</i>	18
<i>Work space</i>	18
<i>Conference badge</i>	18
<i>Support staff</i>	18
<i>Internet access</i>	18
<i>Conference Website</i>	19
<i>Welcome Drink, Reception Dinner, Lunch, Tea Breaks</i>	19
<i>Information about Shanghai</i>	19
<i>Scientific Program Overview</i>	20
Plenary Sessions and Social Events	21
Chronological List of Sessions	23
Workshop and Special Workshop	27
Sessions	29

Welcome Message



A very warm welcome to friends and colleagues ready to take part in the 4th Asian Population Association (APA) Conference, to be held on July 11-14, 2018 at Shanghai University, China.

Shanghai, literally meaning “on the sea”, is an outstanding location for the population conference. In addition to its impressive modernization including new skyscrapers, Shanghai provides a unique and perfect blend of cultures, the modern and the traditional, and the Western and Oriental. It is also one of the most populated cities in the world, with a permanent resident population of 25 million, of which nearly 10 million are immigrants. There are also additional millions of migrant workers in the municipality.

The APA is delighted to have received an enthusiastic response to its call for submission of abstracts. The Scientific Committee has been working diligently on the 1,830 abstracts from more than 45 countries. The 4th APA Conference will cover a wide variety of areas in population studies including fertility, mortality, marriage, aging, sexuality, reproductive health, environment, education, migration, and labor force. Methodology and the quality of data will also be explored. The Conference will be composed of plenary and special sessions, presentations, poster sessions, and pre-/post side meetings.

The Asian Demographic Research Institute (ADRI) at Shanghai University, together with the China Population Association, Shanghai Population Association, China Population and Development Research Center, Fudan University, East China Normal University, Shanghai Academy of Social Science, and Shanghai Academy joined forces to organize this Conference. Without the hard work of the Local Organizing Committee led by Professor Leiwen Jiang and financial support from Shanghai University,

2

the Conference would not have been possible. I would like to extend my deepest appreciation to the members of the Local Organizing Committee.

I am sure the presentations, posters, discussions, and exchange of ideas, together with all the efforts of the Scientific Committee, will contribute to the advancement of Asian demography and make the 4th APA Conference a big success. My special gratitude is extended to Professor Sureeporn Punpuing, chair of the Scientific Committee, the Council members, the Secretariat, and voluntary reviewers of the abstracts for their determination and hard work. Finally, but most importantly, I would like to thank those who devoted a considerable amount of time and effort preparing and revising their abstract and paper.

I look forward to seeing you in Shanghai this coming July.

With best wishes



Doo-Sub Kim
President, Asian Population Association



Organizers:

APA and Its Council

Asia is the world's largest and most populous continent. With almost four billion people, it is home to more than 60% of the world's current population, including the two largest national populations; China and India. Asia is also the center of some of the fastest sustained economic growth rates in the world as well as some of the most intractable problems of poverty. It is home to several language families and many language isolates. Indeed, Asia is both diverse and dynamic in terms of population growth trends. There are many emerging population issues having significant impacts on the future of the world's population as they pose major challenges to communities and local governments across the region. Thus, there is a great need for scientific studies of population that can be translated into policy actions in countries with diverse socio-demographic settings.

APA was registered in Bangkok in 2008 and the Secretariat was set up at the College of Population Studies at Chulalongkorn University. In 2011, the Secretariat was moved to the Institute for Population and Social Research at Mahidol University. A change in the constitution in 2012 extended the term of the council from two to three years. The fourth elected council members (also members of the 4th APAC International Organizing committee) are listed in the table below.

The fifth online election of the APA council members will be in October 2018, which the elected council members will be in the position during 2019-2021.

International Organizing Committee (IOC)

President	Doo-Sub Kim	South Korea	Chair of IOC
Vice President	Baochang Gu	China	Vice Chair of IOC
Immediate Past President	Terence H. Hull	Australia	IOC member
Secretary General	Paul Yip	Hong Kong, China	IOC member
Treasurer	Bhassorn Limanonda	Thailand	IOC member
Council member	K.G. Santhya	India	IOC member
	Sureeporn Punpuing	Thailand	IOC member
	Wendy Hartanto	Indonesia	IOC member
	Yasuhiko Saito	Japan	IOC member
	Youngtae Cho	South Korea	
	Rossarin Gray	Thailand	IOC member

Scientific Committee

Chair	Sureeporn Punpuing
Members	Rossarin Gray
	Leiwen Jiang
	Santhya KG

APA Secretariat Team

Rossarin Gray
 Malee Sunpuwan
 Sarayut Sakultantimetha
 Pasakorn Boonkhum
 Sirinya K.K

Theme Conveners and Reviewers

Theme 1 Fertility and Reproductive Health

Convener: Terence Hull, K G Santhya, Wendy Hartanto

Reviewer: Adrian Hayes, Alan Feranil, Baochang Gu, Connie Gultiano, Gavin Jones, Nimfa Ogena, Ryuichi Kaneko, Sorapop Kiatpongsan, Sureeporn Punpuing, Terence Hull, Valerie Hull, Wassana Im-Em, Wei Chen, Zhenzhen Zheng, Zhongwei Zhao

Theme 2 Mortality, Morbidity, and Epidemiology

Convener: Baochang Gu, Zhongwei Zhao

Reviewer: Abdullah H.M. Al-Khalifah, Dudley Poston, Joo Ean Tan, Juhua Yang, Kaining Zhang, Peng Du, Wan He, Xiaochun Qiao, Xizhe Peng, Xuejin Zuo, Yuan Ren, Zhenmin Xie

Theme 3 Migration Urbanization

Convener: Sureeporn Punpuing

Reviewer: Amara Soonthorndhada, Aphichat Chamrathirong, Aris Ananta, Charamporn Holumyong, E.L. Sunethra, J. Perera, Evi Nurvidya Arifin, Kathleen Ford, Laishram Ladusingh, Li Zhang, Ram B. Bhagat, Sayeed Unisa, Sudarat Musikawong, Sureeporn Punpuing, Yaghoob Foroutan, Yu Zhu

Theme 4 Marriage, Family, and Kinship

Convener: Doo-Sub Kim, Bhassorn Limanonda

Reviewer: Chun-Hao Li, Doo-Sub Kim, Noriko Tsuya, Reiko Hayashi, Sam Hyun Yoo, Wen-Shan Yang, Yeonjin Lee, Yeung Wei-Jun Jean, Yoon-Jeong Shin, Yu-Hua Chen

Theme 5 Demographic Theory, Methods, and Data

Convener: Leiwen Jiang

Reviewer: Jianping Wang, Leiwen Jiang, Wei Chen

Theme 6 Gender, Youth and Population Ageing

Convener: Saito Yasuhiko

Reviewer: Aaron Hagedorn, Abhijit Visaria, Alan Feranil, Amit Kumar, Chi-Tsun Chiu, Chona Echavez, Choy Lye Chei, Chyong-fang Ko, Claire Berja, Elma Laguna, Emiko Takagi, Grace Cruz, Jeofrey Abalos, Josefina Natividad, Christian Joy P. Cruz, Md. Ismail Tareque, Maria Paz Marquez, Midea Kabamalan, Mira Hidajat, Saito Yasuhiko, Sandra Reynolds, Soon Hock Kang, Sureeporn Punpuing, Tuo-Yu Chen

Theme 7 Population, Economics, Environment, and Climate Change

Convener: Leiwen Jiang

Reviewer: Danan Gu, Erich Striessnig, Samir KC, Shah Md. Atiqul Haq, Susana Adamo, Yufen Tong

Theme 8 Education, Wellbeing, Disability, and others

Convener: Mohammad Jalal Abbasi-Shavazi, Paul Yip

Reviewer: Alaka Basu, Ann Goujon, Elke Loichinger, Hossein Mahmoudian, Samir KC, Santosh Jatrana

Theme 9 China population and development

Convener: Leiwen Jiang

Reviewer: Duan Chengrong, Jiang Quanbao, Wang Guangzhou, Zhang Zhen

Special workshop

Convener: Sureeporn Punpuing

National Organizing Committee

Honorary Chair	Donghan Jin, President of Shanghai University
Chair	Yong Duan, Vice president of Shanghai University
Vice Chair	Leiwen Jiang, Director, Asian Demographic Research Institute, Shanghai University
Members	Jinhong Ding, Director, Population Research Institute, China East Normal University
	Baochang Gu, Vice President, Asian Population Association
	Dan He, Director, China Population and Development Research Center
	Juan Li, Deputy Director, President Office, Shanghai University
	Xizhe Peng, Director, Center for Population and Development Policy Studies, Fudan University
	Kaifeng Qin, Deputy Director, President Office, Shanghai University
	Changmin Sun, President, Shanghai Population Association
	Jun Zeng, Director, Social Sciences Office, Shanghai University
	Xiaotian Zhang, Director, International Affair Office, Shanghai University
	Zhenwu Zhai, President, China Population Association
	Wenhong Zhang, Dean, School of Sociology and Politic Sciences, Shanghai University
	Haiwang Zhou, Deputy Director, Institute of Urban and Population Development Shanghai Academy of Social Sciences

Secretariat Team

Yuzhao Liu	Deputy Dean, School of Sociology and Politics Sciences, Shanghai University
Hao Yuan	Deputy Dean, School of Sociology and Politics Sciences, Shanghai University
Huijie Lai	Deputy Director, International Affair Office, Shanghai University
Yisheng Xu	Deputy General Secretary, School of Sociology and Politics Sciences, Shanghai University
Samir KC	Professor, Asian Demographic Research Institute, Shanghai University
Chen Chen	Post-doc, Asian Demographic Research Institute, Shanghai University
Qi Hu	Secretary General, Shanghai Population Association
Hong Wei	President Office, Shanghai University
Wuli Zhou	Social Sciences Office, Shanghai University
Fan Jie	Director of General Office, School of Sociology and Politics Sciences, Shanghai University
Yu Zhang	Administrator, Asian Demographic Research Institute, Shanghai University
Fenfang Xu	Administrator, School of Sociology and Politics Sciences, Shanghai University
Jiaolei Liu	Director of Student Affairs, School of Sociology and Politics Sciences, Shanghai University

Host

Shanghai University

Co-hosts

China Population Association

China Population and Development Research Center

Population Research Institute, East China Normal University

Center for Population & Development Policy Studies, Fudan University

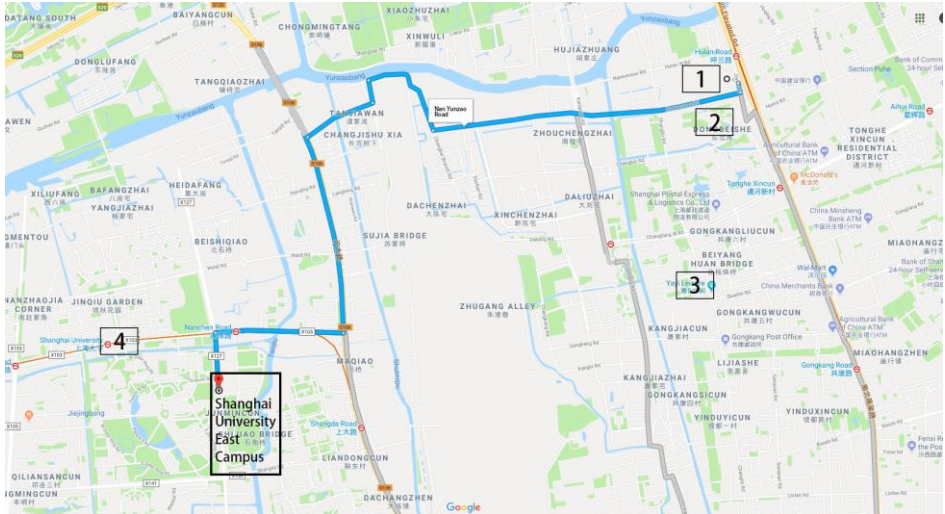
Shanghai Academy

Shanghai Academy of Social Science

Shanghai Population Association

Conference Information:

Locations of the conference hotels and venues



Note:

1. Baoshan Conference Center (for registration and plenary sessions)
2. Holiday Inn (conference hotel)
3. Ramada Encore (conference hotel)
4. New Lehu Building Hotel (conference hotel)
5. Shanghai University East Campus (for parallel sessions, special workshops, booth exhibitions)

Conference Hotels

➤ **Holiday Inn Express Shanghai Gongkang**

Address: No.9 South Wenzao Road, Shanghai, 200443, China
(上海市宝山区南蕰藻路 9 号)

➤ **Shanghai Ramada Encore Hotel**

Address: No. 555 Gongkang Road, Shanghai, 200443, China
(上海市宝山区共康路 555 号)

➤ **New Lehu Building Hotel**

Address: No. 99 Shangda Road, Shanghai, 200444, China
(上海市宝山区上大路 99 号)

Conference Venuses

➤ **Baoshan Conference Center**

Address: 458 Jiwen Road, Baoshan District, Shanghai, China
(上海市宝山区纪蕴路 458 号)

How to get there:

From *Holiday Inn Express Shanghai Gongkang*, it's about 3-minute walk.

From *Shanghai Ramada Encore Hotel*, conference shuttle buses are provided (see shuttle schedule at the reception desk).

From *Hongqiao Airport or Hongqiao Railway Station*:

By taxi: Time 60 mins / Cost 130 RMB

By Metro: Time 90 mins / Cost 6 RMB

Metro Line 10, change at Shaanxi South Road (陕西南路) to Line 1 (12 stops), and get off at Hulan Road (呼兰路 Exit No. 3)

From *Pudong Airport*:

By taxi: Time 90 mins / Cost 200 RMB

By Metro: Time 120 mins / Cost 8 RMB

Metro Line 2 (18 stops), change at People's Square (人民广场) to Line 1 (11 stops), and get off at Hulan Road (Exit No. 3)

From *Shanghai Railway Station*

By taxi: Time 30 mins / Cost 60 RMB

By Metro: Time 30 mins / Cost 4 RMB

Metro Line 1 (8 stops) and get off at Hulan Road (Exit No. 3)

➤ **Shanghai University, East Campus**

Address: 333 Nanchen Rd, Baoshan, Shanghai, China

(上海市宝山区南陈路 333 号)

How to get there:

From *Holiday Inn Express Shanghai Gongkang*

By Conference Shuttle: see schedule at the reception desk.

By Taxi: 20 minutes / Cost 30 RMB

From *Shanghai Ramada Encore Hotel*

By Conference Shuttle: see schedule at the reception desk.

By Taxi: Time 20 mins / Cost 30 RMB

From *Hongqiao Airport and Hongqiao Railway Station:*

By Taxi: Time 40 mins / Cost 70 RMB

By Metro: Time 80 mins / Cost 5 RMB

Metro Line 2 (7 stops), change at Jing'An Temple (静安寺) to Line 7 (11 stops), and get off at Nanchen Rd (南陈路 Exit No. 2)

From *Pudong Airport:*

By Taxi: Time 100 mins / Cost 220-250 RMB

By Metro: Time 90 mins / Cost 5 RMB

Metro Line 2 (7 stops), change at Jing'An Temple to Line 7 (11 stops), and get off at Nanchen Rd (Exit No. 2)

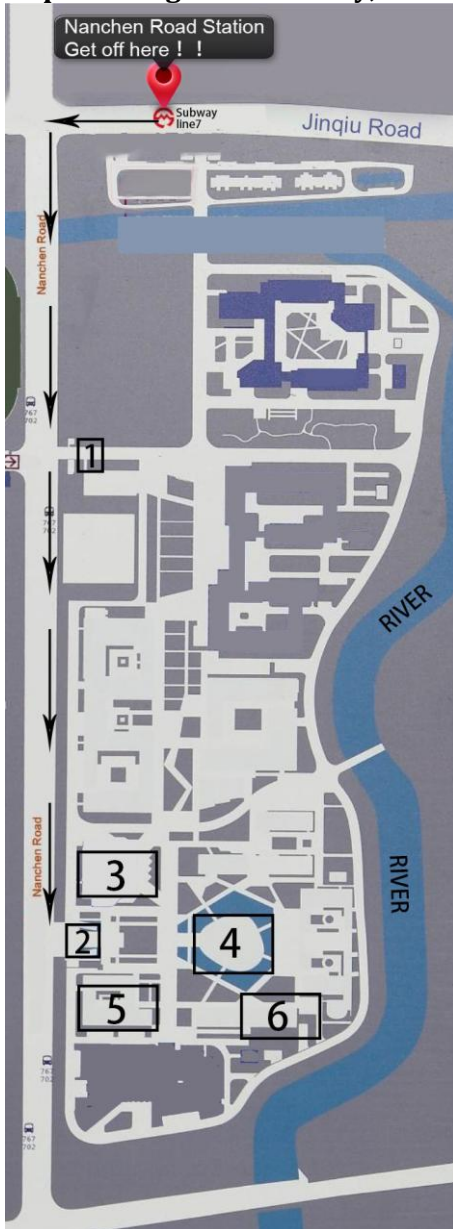
From *Shanghai Railway Station*

By Taxi: Time 35 mins / Cost 71 RMB

By Metro: Time 1hour and 10 mins /Cost 5 RMB

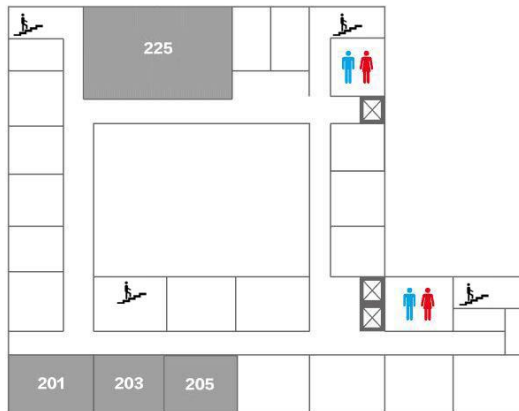
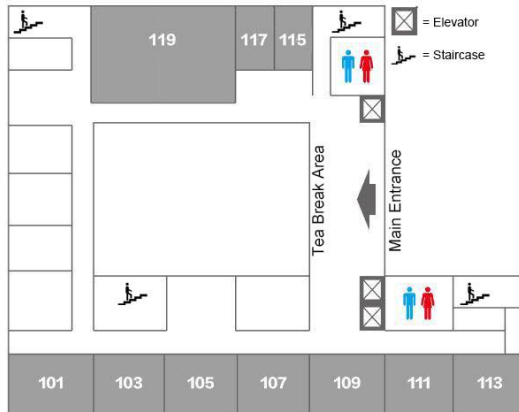
Metro Line 3/4 (2 stops), change at Zhenping Road (镇坪路) to Line 7 (8 stops), and get off at Nanchen Rd (Exit No. 2)

Map of Shanghai University, East Campus



1. West Gate
2. Southwest Gate
3. Cafeteria
4. Library
5. Graduate Building (GB)
6. Sociology Building

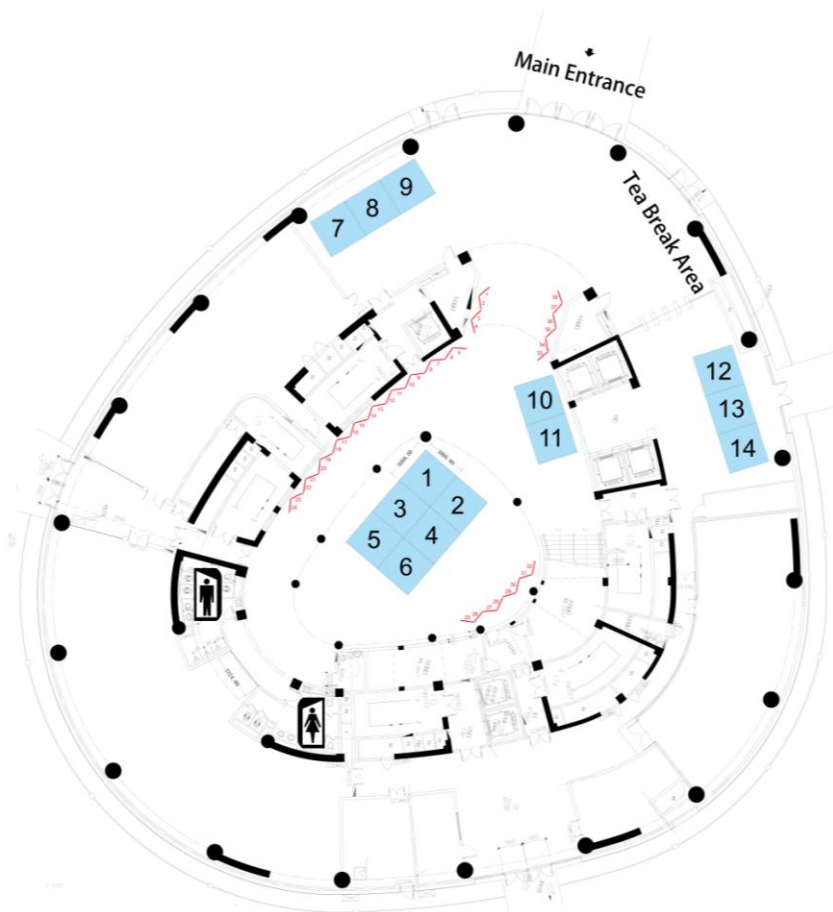
Floor map of Graduate Building (GB)



Note:

- Meeting rooms for regular sessions are: 101, 103, 105, 107, 109, 111, 113, 201, 203, 205
- Meeting room for special workshops: 119
- Work space: 115
- Preparation room: 117

Floor map of Library Exhibition Hall



Note:

- Box 1-14 are numbered exhibition booths;
- Posters are numbered along the sides of central area of the hall

Exhibitors

1. Asian Demographic Research Institute (ADRI)
2. The International Union for Scientific Studies of Population (IUSSP)
3. Asian MetaCentre for Population and Sustainable Development Analysis
4. China Population and Development Research Center
5. United Nations Population Fund
6. IPUMS Center for Data Integration
7. School of Sociology and Political Science (SSPS), Shanghai University
8. Chinese Journal of Sociology/ Chinese Sociology Review/Society
9. The School of Demography, Australian National University
10. Social Sciences Academic Press (China)
11. Beijing Elderly Care Facility Survey Program
12. Institute for Population and Social Research, Mahidol University
13. College of International Education, Shanghai University
14. Shanghai Academy

Sponsors

Shanghai University
China Population and Development Research Center
United Nations Population Fund
Shanghai Academy
Chinese Journal of Sociology
School of Sociology and Political Sciences, Shanghai University

Registration

The registration desk will be located by the entrance of Baoshan Conference Center and the entrance of Graduate Building on Shanghai University East Campus. **Please register on time.**

Opening Hours:

Baoshan Conference Center

Time: 13:00-16:30, Wednesday, July 11th 2018

Address: 458 Jiwen Rd, Baoshan, Shanghai (上海市宝山区纪蕴路 458 号)

Graduate Building, Shanghai University East Campus

Time: 7:30-12:15, Thursday, July 12th 2018

Address: 333 Nanchen Rd, Baoshan, Shanghai (上海市宝山区南陈路 333 号)

Work space

During conference hours, conference staff can be reached in Graduate Building Room (GBRM) 115. Conference participants will upload presentation slides and use computers to check email in GBRM 117.

Conference badge

Participants will receive a badge upon registration. Since your personal badge is your entrance ticket to the sessions, please make sure that **you wear your badge at all times during all conference activities and social events.**

Support staff

Conference support staff will wear a blue T-shirt with a logo of ADRI.

Internet access

Wireless Internet is available at the conference venue. Network name and password are printed on a flyer in your conference bag. You can also use "eduroam". There will also be several computers in GBRM 117 for quick email-checking.

Conference Website

Latest news and updates about the 4th APAC can be found in:
<https://apac2018.medmeeting.org/6831?lang=en>

Welcome Drink, Reception Dinner, Lunch, Tea Breaks

Welcome drink will follow the opening ceremony at Golden Hall of Baoshan Conference Center on July 11, 2018. Reception dinner and performance is going to be held also at Golden Hall on the evening of July 12. On July 12-13, lunch will be provided free of charge at the cafeteria of Shanghai University East Campus. All participants will have lunch on the 1st floor of the Cafeteria, except those registered for vegetarian or halal food which will be served on the 3rd floor. Coffee, tea, and snack will be provided at both the first floor of Graduate Building and the Library Exhibition Hall during the breaks on July 12-13.

Information about Shanghai

General information about Shanghai can be found in conference website under "Conference". The webpage is:
<http://apac2018.medmeeting.org/Content/75631>